

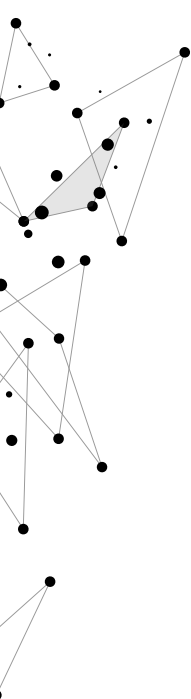
---

# Into the World

STRATEGIC PLAN  
2022-2026

Discover our plans  
for the future





**At IGS, we acknowledge the First Nations People of Australia as the strong, resilient and resourceful custodians who have passed on their cultures, stories and songs for generations always connected to Country and nurturing the land, seas and skies. We pay our respects to the Gadigal People of the Eora Nation on whose lands IGS stands and where we strive to value the perspectives of the oldest surviving culture in the world. This land was, is, and always will be Aboriginal land.**

**Right:** IGS Indigenous students across Primary and High School enjoyed pooling their artistic talents, led by local Aboriginal artist Bianca Caldwell who runs Wiradjuri Dreaming, March 2021.





---

## PRINCIPAL'S MESSAGE

*Into the World* outlines a vision for our School and a clear and compelling direction for the next five years. It builds upon the strong foundations of the School's cherished history and continues our exciting progress. It reaffirms the fundamental importance of our values of diversity, personal achievement, connectedness, authenticity and vibrancy.

The implementation of this plan will ensure that our students have new and expansive opportunities to reach their full potential and to shape their futures. The plan aims to facilitate the development of agency and courage in our students, providing them with an educational journey that equips them to thrive in a complex world where they can apply their reason, compassion, tenacity and their innate curiosity to new situations that they will encounter long after they leave the safe and nurturing environment of their school days. Our strategic aspirations this time around are Deeper Learning, Students Striving and Flourishing and A Strong and Sustainable School.

*Into the World* is the result of widespread consultation with the IGS community as we engaged in a year-long conversation about who we are and who we want to be. We wanted to leverage emerging forces in the external environment to create new ideas about the future, conscious that our current preschoolers will leave school in 2035. We also wanted to strengthen our capacity to embrace change... And here we are.

This is our blueprint, forged during a pandemic, but with a profound sense of hope and optimism, as well as a deep appreciation of the crucial importance of education in the life of a child. Through its aspirations, areas of action and strategic initiatives we have the opportunity to champion positive change into the future. In that sense, *Into the World* is our guiding star to 2026 and will become part of our School's remarkable transformation story as we enter our fourth decade.

I am grateful to Board Chair Dr Marie Leech, Board Directors, my colleagues, IGS parents, alumni and especially our students, whose insights are the special alchemy of this plan.

I commend it to you.

Shauna Colnan  
**Principal**





## CHAIR OF THE BOARD'S MESSAGE

As International Grammar School completes its third action-packed decade, it is tremendously exciting to witness and be a part of the vibrancy of this unique learning institution which is so much more than the sum of its parts.

Schools are beloved and respected in our communities for the vital roles they play in the lives of generations of children, young people and their families.

As a child develops and grows, mastering more and more skills, so too can an organisation thrive, increasing in its effectiveness, in the breadth of its endeavours and in the sheer number of lives it enriches.

IGS is more than an Early Learning Centre, Primary School and High School. It is more than its many academic departments and the expertise of its teachers. It is more than the community of students and families it serves, and far more than the teaching and learning spaces of its expanding campus.

Through deliberate, informed and creative engagement with parents, staff, students, alumni and other members of the community, IGS is ready to embrace a strategic plan for the times - innovative, bold and compelling.

With one foot in the Innovation Hub that is Ultimo and its surrounds, and eyes, as always, firmly on the world and on the future, IGS continues to prepare for the decades ahead.

Dr Marie Leech

**Inside the IGS Reggio Emilia  
inspired Early Learning Centre**



---

# OUR PLACE

## OUR PAST

IGS was founded in 1984 with a trailblazing vision to provide students with the gift of a bilingual education. Languages would be at the centre of a broad liberal education, rich in the study of music, the arts and the traditional academic disciplines.

This was to be a progressive school – contemporary, independent, coeducational and secular.

## OUR PRESENT

Today this pioneering spirit continues.

IGS is a vibrant school with a warm and inclusive community. It has a population of 1300 students that we will gently grow to 1400 over the next five years.

*Unity Through Diversity* is our motto and our five core values – diversity, personal achievement, connectedness, authenticity and vibrancy – are at the heart of who we are and what we do.



## OUR FUTURE

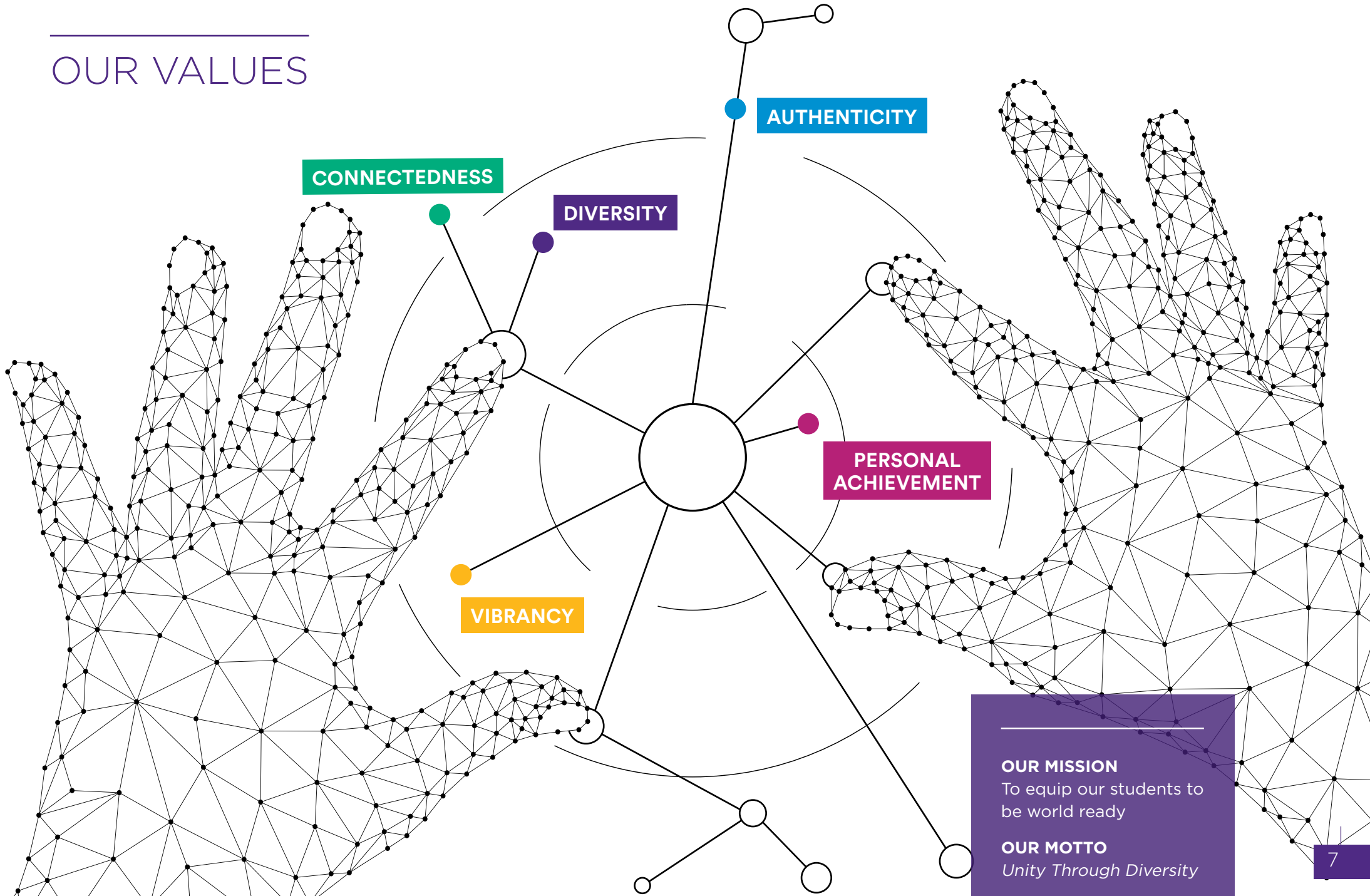
This is an exciting time for IGS. We are a passionate learning community, located in the nation's most creative, dynamic, digital precinct, a short walk to UTS, the University of Sydney, the Pyrmont Peninsula and the Bays Precinct whose five sites span Ultimo and Glebe.

Our campus is in the centre of this emerging international innovation hub. Our students are set to gain enormously from the transformation that is underway in our area.



We will also build upon the life-changing learning experiences that all students at IGS currently enjoy. Our award winning SAGE Program remains our benchmark for excellence in curriculum design. All students in the High School will continue to be enriched by The Shakespeare Bootcamp in Year 7, The Rocks Quest in Year 8, Opera on Kelly Street in Year 9 and in the boldest project of them all, Year 10, Tasmania: Writing the Island. The four elements of SAGE – student choice, authentic learning experiences, global relevance and exhibitions of learning – will underpin all of our strategic initiatives over the next five years.

# OUR VALUES



**OUR MISSION**  
To equip our students to be world ready

**OUR MOTTO**  
*Unity Through Diversity*

---

# STRATEGIC ASPIRATIONS

We will deliver our vision through  
three strategic aspirations:



These aspirations are interdependent,  
fostering a school-wide approach.





---

# AREAS OF ACTION

**Eight Areas of Action will define and shape our school improvement program over the next five years.**

Drive excellence in teaching and learning

Curate expansive opportunities for students in the Pymont Peninsula and beyond

Transform Early Childhood Education

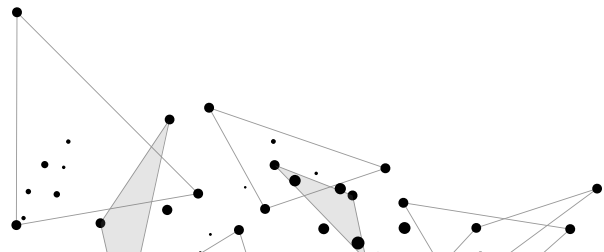
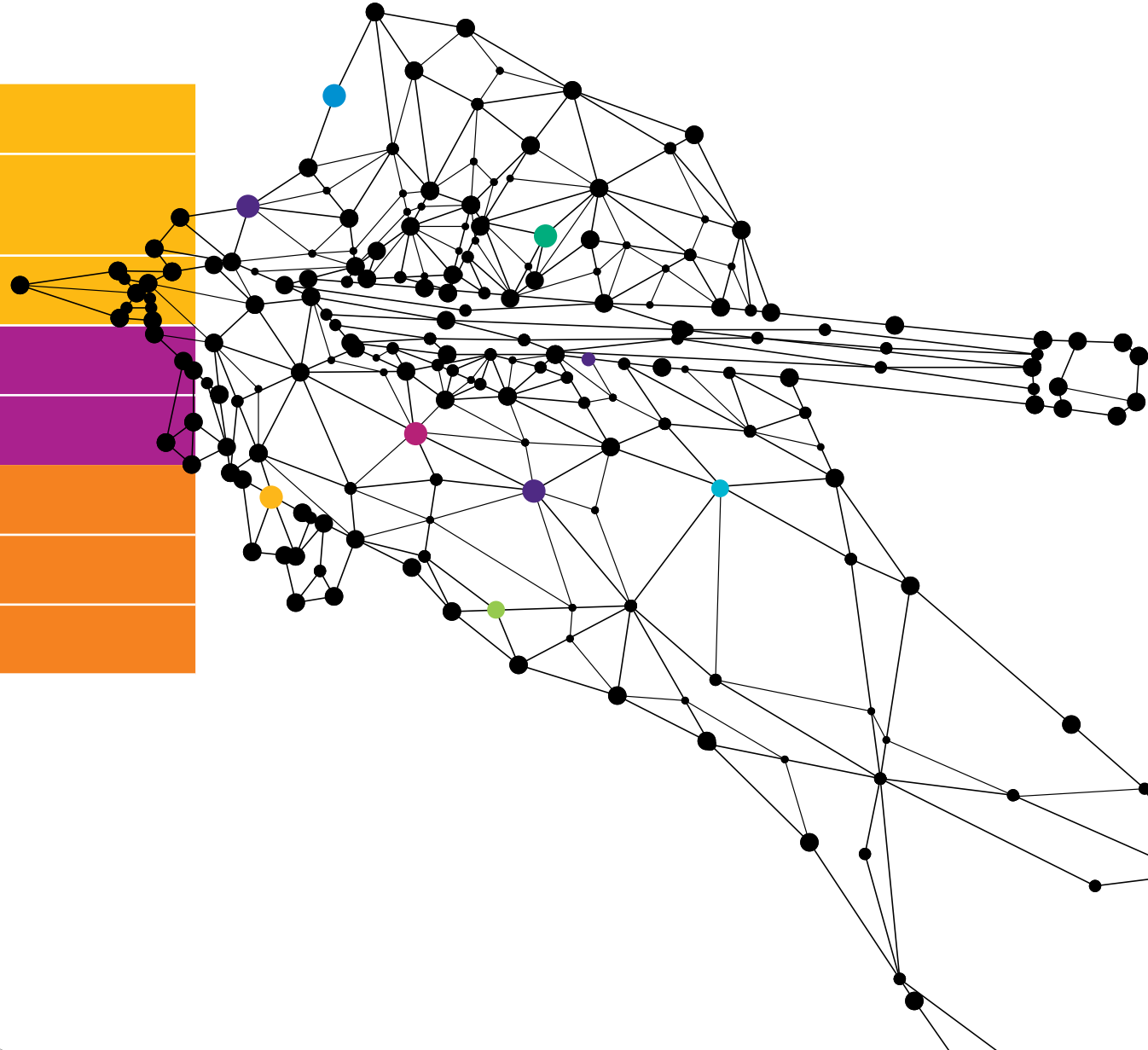
Grow courageous, altruistic and adaptable individuals

Nurture the health and wellness of students and staff

Optimise our systems and technologies

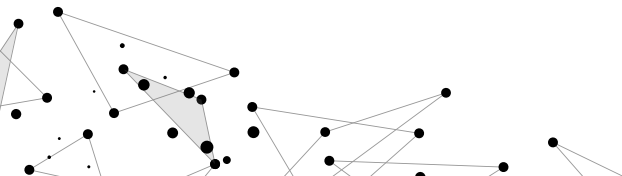
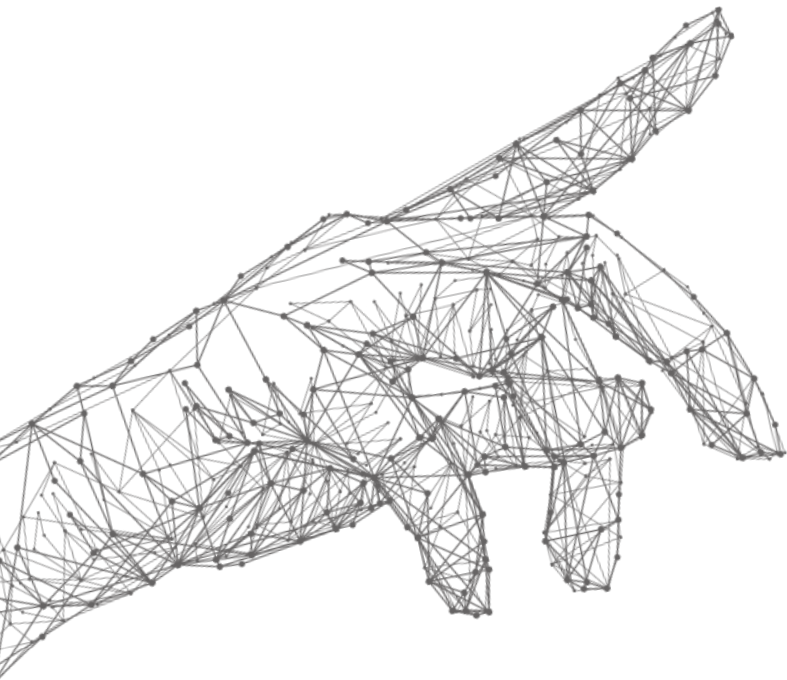
Broaden our implementation of sustainable practices

Secure, improve and expand the campus



# STRATEGY WHEEL

Vision 2026

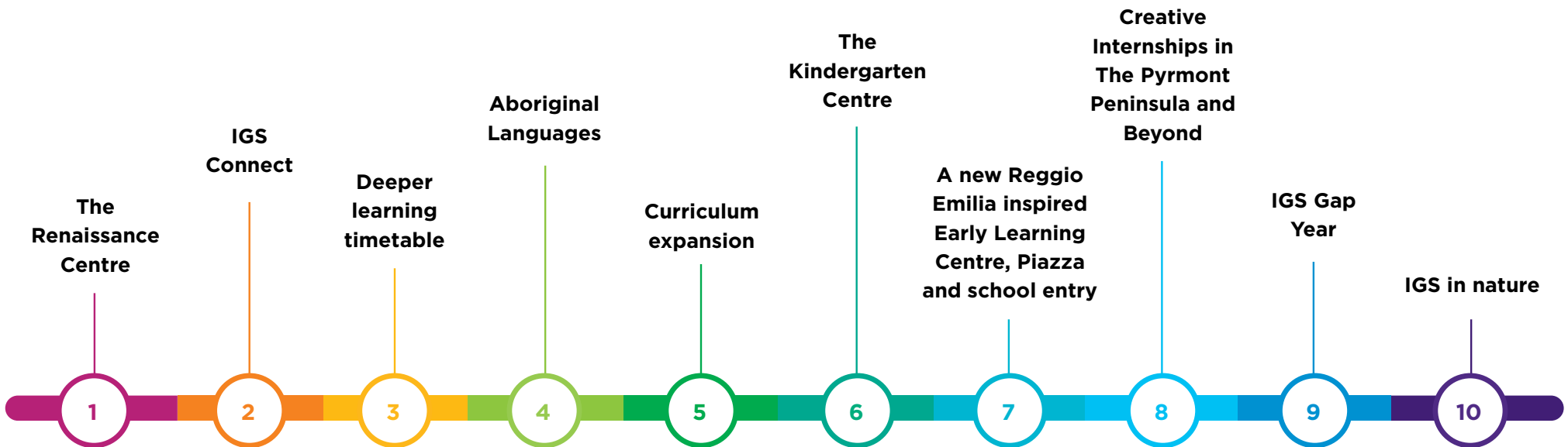


## COMMITMENT TO ACTION

# FIVE YEARS | 10 STRATEGIC INITIATIVES

We will implement 10 initiatives over five years to fulfil our strategic aspirations for

- Deeper learning
- Students striving and flourishing
- A strong and sustainable school



Drive excellence in teaching and learning | Curate expansive opportunities for students in the Pymont Peninsula and beyond | Transform Early Childhood Education

Grow courageous, altruistic and adaptable individuals | Nurture the health and wellness of students and staff

Optimise our systems and technologies | Broaden our implementation of sustainable practices | Secure, improve and expand the campus



## COMMITMENT TO ACTION

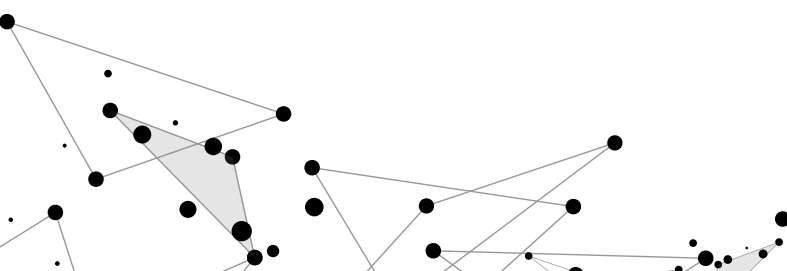
---

# STRATEGIC INITIATIVE ①

### The Renaissance Centre

IGS will expand into the corner of Mountain Street and Smail Street, beside our Fusion Building Classrooms.

This centre will house our School's first academic lecture theatre, seminar and meeting rooms, along with the Manuela Bachmann Dance Studio, paving the way for us to introduce Dance for the HSC, expanding our offerings in the Performing Arts.



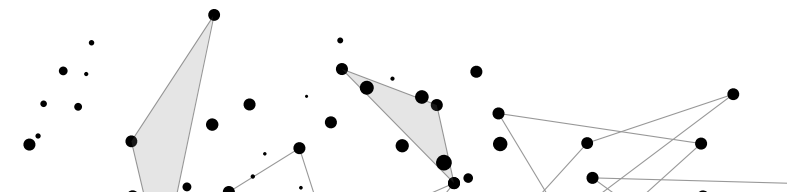
## COMMITMENT TO ACTION

# STRATEGIC INITIATIVE ②

### IGS Connect

We will launch a program in altruism for our Primary School and Middle School students.

Building upon the Year 9 Connect Program, it will include volunteering with Not-for-Profit Organisations and causes, as our students learn more about the experiences of others and give back, out in the community.



## COMMITMENT TO ACTION

# STRATEGIC INITIATIVE ③

### Deeper learning timetable

We will reimagine and redesign the school day with a more flexible timetable, conducive to personal achievement and deeper learning.



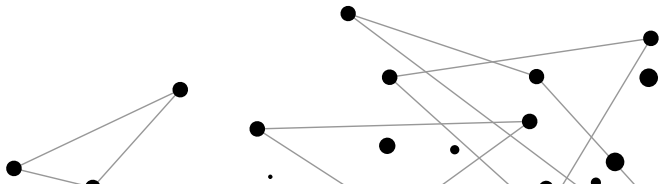
## COMMITMENT TO ACTION

# STRATEGIC INITIATIVE ④

## Aboriginal Languages

Building on our unique and extraordinary languages program as well as our popular and exceptionally successful HSC Aboriginal Studies program, introduced in 2018, we will contribute to the revitalisation of the languages of First Nations People.

We will collaborate with local Aboriginal communities, with our Indigenous Scholars and their families, and with Aboriginal academics and linguists, as we develop an inspirational new program in Aboriginal Languages.





## COMMITMENT TO ACTION

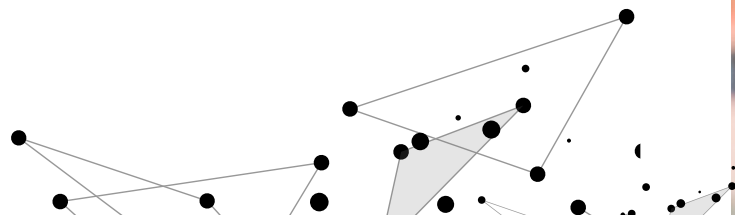
# STRATEGIC INITIATIVE ⑤

### Curriculum expansion

We will continue to expand and deepen curriculum offerings at our School by introducing HSC Dance, Studies of Religion, Software Design and Development, and Community and Family Studies.

We will develop more vocational education opportunities for students through TAFE, along with more diverse and tailored pathways into the workforce, into university, and into other further training, building on our long tradition of impressive graduate outcomes.

We will also open more pathways for students to accelerate and sit for HSC courses early as well as participating in university courses while still at school.



## COMMITMENT TO ACTION

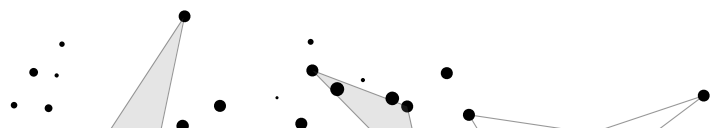
---

# STRATEGIC INITIATIVE ⑥

### The Kindergarten Centre

In The Wright Building, incorporating Levels 1 and 2 and The Peace Garden, we will create an enchanting, safe and nurturing learning environment for our children's first year of school.

This is another project of the IGS Master Plan and will facilitate the exciting transformation of Early Childhood Education at IGS.



## COMMITMENT TO ACTION

# STRATEGIC INITIATIVE ⑦

### A new Reggio Emilia inspired Early Learning Centre, Piazza and school entry

This is a landmark project of the IGS Master Plan.

It will provide flexible learning, through play-based experiences suited to young children's interests and developmental stage, maximising learning through exploration, inquiry and problem solving.

There will be an atelier and an atelierista who will explore and document the children's learning, an inspiring musical playground on Level 1, and a kitchen and dining room for our children who will enjoy a cooked lunch each day.

The Piazza will include a larger recreational playground for all students on the ground floor of the Reg St Leon building, modelled on the concept of the European town square.

We will introduce an IGS café and a fresh, greener entrance to our School.

**The IGS Piazza, modelled on the European Town Square, with the new musical playground for Early Learning above**



## COMMITMENT TO ACTION

# STRATEGIC INITIATIVE ⑧

## Creative Internships in the Pymont Peninsula and beyond

In partnership with our parent body and our alumni, we will pioneer a professional work shadowing program for Year 10 students in our vibrant neighbourhood.

This will culminate in a Night of Industry exhibition of learning staged by our students, a celebration of real-world learning out in the field.

This is just one project that will knit the School into the fabric of the exciting 24/7 global hub that is emerging locally, offering expansive possibilities in the Pymont and Bays Precincts and the Innovation Corridor.

We will link our students into custom learning opportunities at the University of Sydney, UTS, Notre Dame, the Powerhouse Museum, Atlassian, the new Fish Markets, local start-ups and other creative tech industries evolving all around us.

We will forge real-world learning opportunities out in the field for our students who have a particular passion for Science, Technology, Engineering, the Arts and Mathematics (STEAM).



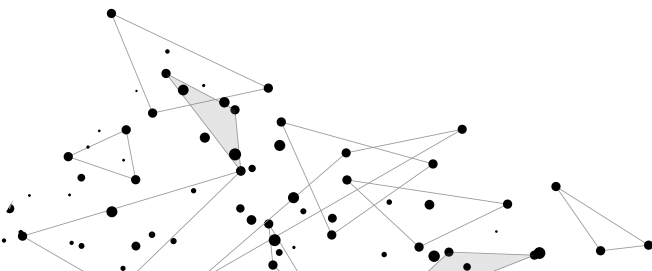
## COMMITMENT TO ACTION

# STRATEGIC INITIATIVE 9

## IGS Gap Year

We will create a global IGS Gap Year Program for the Year 12 graduating class.

In their year after school we will support our Alumni to see the world with a gap year, working in schools in the UK, the US, Europe and Asia.



## COMMITMENT TO ACTION

---

# STRATEGIC INITIATIVE 10

### IGS in nature

Finally, in an exciting move at this point in the School's history, we will expand our campus to encompass an experiential learning centre, in nature and on Country, for our students of all ages, and for our community, within two hours of Sydney.

This environmental education centre, wellness retreat and place for professional learning and community engagement will offer a beautiful and peaceful learning continuum for students.

It will host language immersion camps, geography, science and sustainability field studies, outdoor education, Shakespeare in the Glade, music camps, writers' retreats, art en plein air, leadership programs and HSC study camps and so much more. Embracing the natural world, it will expand our sense of connectedness and belonging.

It will be a place where memories are made for the next generation of IGS students during their formative years.





## THANK YOU

International Grammar School is a member school of the Association of Heads of Independent Schools of Australia (AHISA), the Independent Primary School Heads of Australia (IPSHA), the Association of Independent Schools NSW (AISNSW) and the Heads of Independent Coeducational Schools NSW & ACT (HICES).

The School is governed by a Board of Directors.



[facebook.com/igssyd](https://facebook.com/igssyd)



[linkedin.com/school/international-grammar-school](https://linkedin.com/school/international-grammar-school)



[twitter.com/igssyd](https://twitter.com/igssyd)



[instagram.com/igssyd](https://instagram.com/igssyd)



INTERNATIONAL  
GRAMMAR SCHOOL

[www.igssyd.nsw.edu.au](http://www.igssyd.nsw.edu.au)

